

Name: _____

Date: Thurs, 4/30



WINK Sheet - Unit 10: Angles and Triangles

<i>Angle Relationship</i>	<i>Angle Fact</i>	<i>Diagram</i>
<p>1.) How do we name an angle?</p>	<ul style="list-style-type: none"> - Use just the vertex. Ex: $\angle E$ - Use a point on each ray with the vertex in the center. <p>Ex: $\angle DEF$ or $\angle FED$</p>	
<p>2.) Vertical Angles</p>	<ul style="list-style-type: none"> - Angles formed when two lines intersect - Angles that are opposite each other. - Are congruent (equal) <p>Ex: $\angle 1$ and $\angle 3$ are vertical $\angle 2$ and $\angle 4$ are vertical</p>	
<p>3.) Complementary Angles</p>	<ul style="list-style-type: none"> - Two or more angles that form a right angle. - Sum (add up) to 90° <p>Ex: $\angle 1$ and $\angle 2$ are complementary</p>	
<p>4.) Supplementary Angles</p>	<ul style="list-style-type: none"> - Two or more angles that form a straight line. - Sum (add up) to 180° <p>Ex: $\angle 3$ and $\angle 4$ are supplementary</p>	
<p>5.) Interior Angles of a Triangle</p>	<ul style="list-style-type: none"> - The sum of the interior angles of a triangle is 180°. <p>Ex: $\angle A + \angle B + \angle C = 180^\circ$</p>	

Name: _____

7R

Date: _____

Classwork 10.5

Unit 10 Review

1) Fill in the blanks with the correct type of angle (acute, right, obtuse, straight)

- a) A _____ angle is an angle that measures **exactly 90°** .
- b) An _____ angle is an angle that measures **less than 90°** .
- c) An _____ angle is an angle that measures **more than 90° but less than 180°** .
- d) A _____ angle is an angle that measures **exactly 180°** .

2) Which pair of angles is **supplementary**?

- A 27° and 163° B 75° and 85°
C 76° and 104° D 84° and 6°

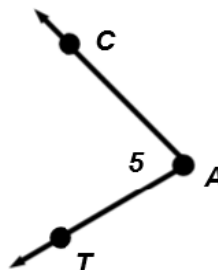
3) What is the **complement** of a 31° angle?

- A 31° B 59° C 90° D 149°

4) If the measure of an angle is 76° , what is the measure of its **supplement**?

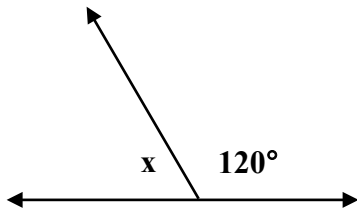
5) Which of the following is **not** a correct way to name the angle shown?

- A $\angle CAT$
B $\angle TCA$
C $\angle A$
D $\angle 5$

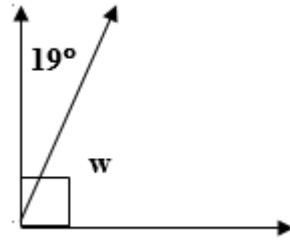


#6-7 Name the angle relationship and find the measure of the missing angle in each of the following.

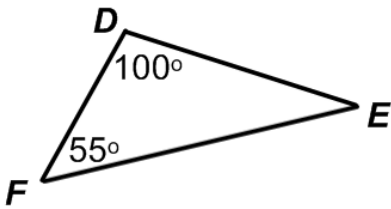
6)



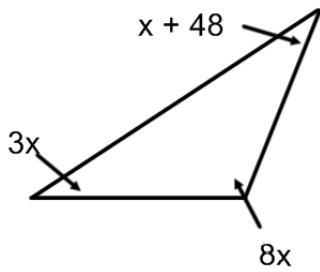
7)



8) Find the value of angle E in the triangle below.

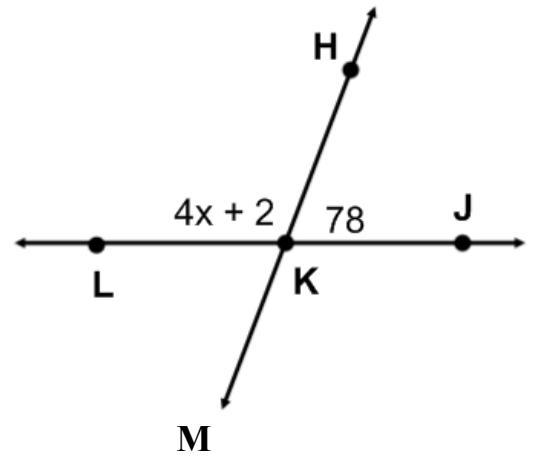


9) Find the value of x in the triangle below.



10) a. What is the angle relationship formed by $\angle HKL$ and $\angle HKJ$?

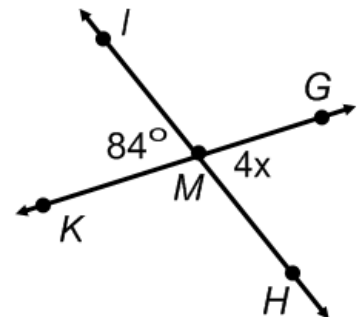
B. Find the value x .



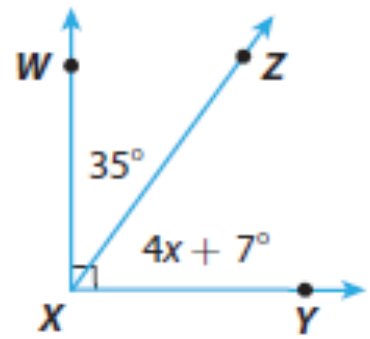
c. What is the measure of $\angle HKL$?

11) a. What is the angle relationship formed by $\angle GMH$ and $\angle IMK$?

b. Find the value of x .



12) a. What is the angle relationship shown below?



b. Find the value of x.

c. What is the measure of $\angle ZXY$?